

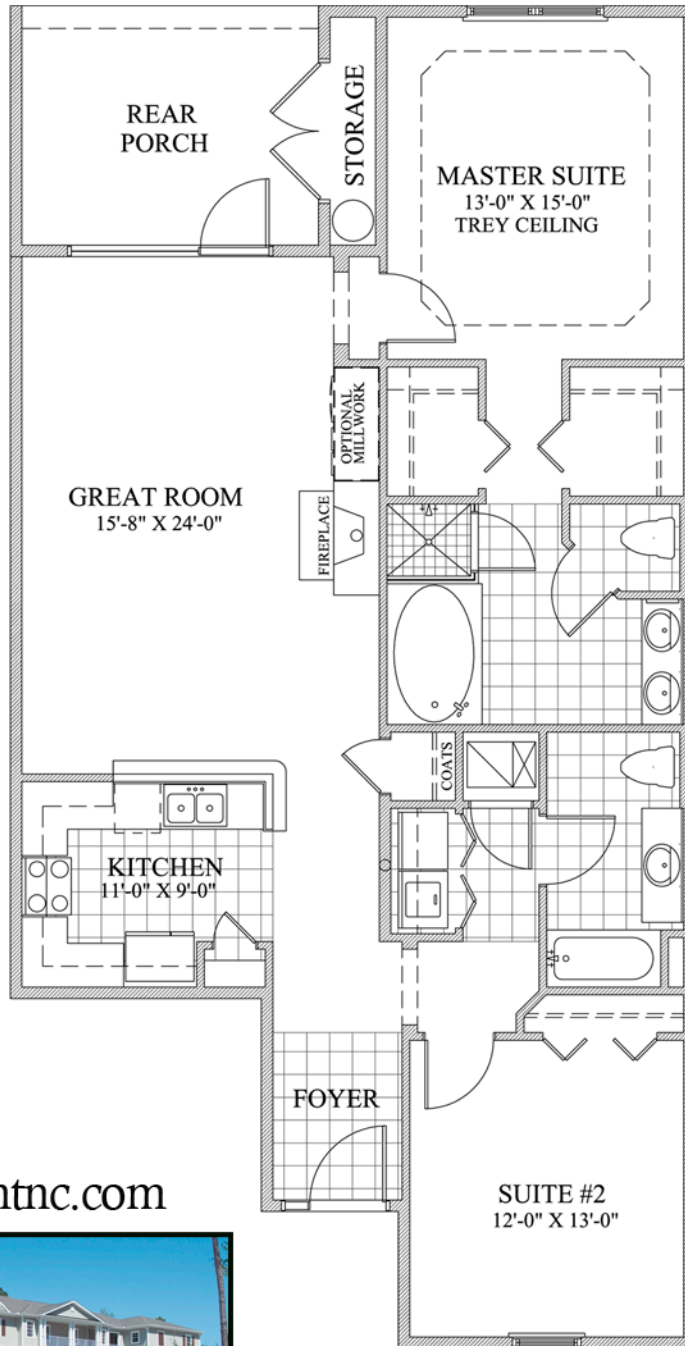


# PASSAGE POINT

ECHO FARMS GOLF & COUNTRY CLUB

## RESIDENCE A

1328 HSF



[www.passagepointnc.com](http://www.passagepointnc.com)



Revised 10-23-2008

For more information contact:  
Holly Donaldson | Phone: (910) 470-3292

Square footage amount is provided as an example only. Prices, house size, floor plans, room sizes, and other specifics may vary at Sellers' discretion .  
Please verify actual specifics before entering into any contract.